

# Whirlpool

DESIGNED TO DELIGHT



DYNAMIC ECO,  
UNPARALLELED SAVINGS



# Convenience to Lifestyle

At Whirlpool, we believe in creating experiences that complement your lifestyle for ultimate and effortless convenience. This is the driving inspiration behind our latest range of Dynamic Eco front load washers. Powered by the **6<sup>TH</sup> SENSE** Technology, our washer automatically allocates the right amount of resources and delivers tailored treatments for your garments to provide the best washing performance. This intuitive technology guarantees up to 50% savings on electricity, water and time, as well as fuss-free washing, bringing the ultimate convenience to your lifestyle.



At Whirlpool, we believe that advanced technology should always deliver superior performance. We understand that technology is about surpassing expectations in getting every task completed and leaving you with a sense of delight.

We are purposeful and never lose sight of what performance means and how it should be delivered. We design home appliances with advanced technologies, giving you an assurance of better results in everyday tasks at home. We make your moments at home even more enjoyable - this is our commitment to you.

**Whirlpool. Designed to delight. Bringing convenience to you.**



# Innovative, Intuitive and Intelligent 6<sup>TH</sup> SENSE Technology



### Weight

During spinning, intelligent sensors detect the weight of the load, ensuring clothes are evenly spread before adjusting the spin speed accordingly.



### Temperature

During warm wash mode, water temperature is automatically measured and controlled for the perfect wash.



### Soil Level

The sensors automatically sense soil level and degree of dirtiness to allocate the right amount of water for efficient and effective washing.



### Speed

During washing and spinning, our state-of-the-art technology controls the speed of the revolving drum. The speed control is based on the load and program to maximise wash efficiency without compromising on laundry care.



### Water Level

Sensors allocate the amount of water to ensure optimum water level at all times.



### Bubbles

After washing, sensors detect the amount of bubbles and allocate rinse cycles accordingly.

			<b>50%<sup>†</sup></b> savings on electricity, water and time	
<b>Water Conservation</b>	<b>Electricity Conservation</b>	<b>Time Conservation</b>		

<sup>†</sup> Compare to a non-6<sup>TH</sup> SENSE Technology washer

# Water and Energy Savings

## Advanced eco technology for a sustainable future



Whirlpool is committed to doing its part for environmental conservation, which is why we have spent time and effort into developing technologies that guarantee significant improvements in energy and water consumption with our laundry appliances. Our washers are equipped to provide a dynamic wash performance, while you do your part to conserve resources and protect the environment.

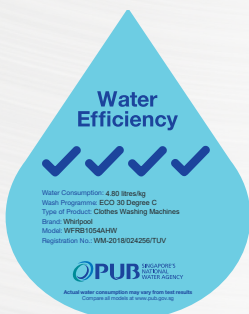
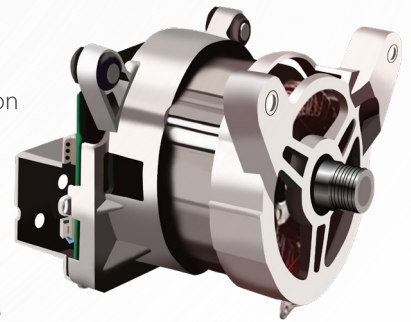


### SENSE Inverter

**Quiet, Less Vibrations** - The SENSE Inverter automatically adjusts drum rotation to ensure a seamless and quiet wash performance. With smoother and more efficient motor control, you can expect less noise and vibration and an even more powerful performance compared to non-inverter washing machines.

**Resources Conservation** - The SENSE Inverter also cleverly detects conditions of laundry through the 6<sup>TH</sup> SENSE Technology and continuously adjusts settings to maximize electricity, water and time savings. Now, with every wash, you get maximum power and efficiency while doing your part to conserve resources.

**Durability** - With less vibration and more stability, the SENSE Inverter Motor is more durable and long-lasting, coming with a 10-years warranty for guaranteed reliability you can trust.



### Best in Class Water Efficiency

Our intelligent 6<sup>TH</sup> Sense technology and SENSE inverter are also designed to provide you with unparalleled water efficiency. All our washers\* have been awarded with 4 ticks which is the best rating under the Mandatory Water Efficiency Labelling Scheme (WELS) in Singapore.



### Instant Detergent Dissolving System

Detergent dissolves much faster with this feature along with the help of an anti-rust filter. A heavy water flow aids in the dissolution of the powder before it is being added into the drum. This allows:

- ✓ Effective washing and rinsing
- ✓ 30% savings on detergent
- ✓ Prevention of detergent powder from clumping
- ✓ Preservation of fabric color
- ✓ Effective removal of stain or detergent residue

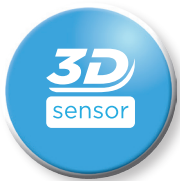
\* Applicable to Dynamic Eco washers under Eco 30°C

# Silent reliable performance



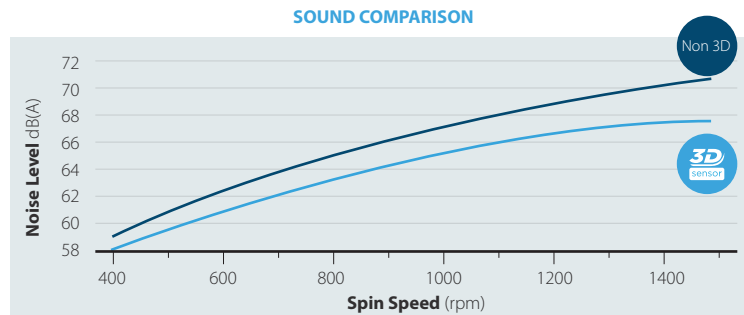
## Innovative, Robust Design

Our machines are designed and built to last. Its U-shaped one-piece casing is intentionally developed to reduce noise, absorb shock and minimize vibration. The unilateral design of the side casing also promotes multi-directional noise dispersion during the spin phase for less disruption. In addition, the thick material ensures durability with anti-rust features for an extended lifespan of the washing machine.



## Intelligent Stabilizer System

The washer comes in-built with an intelligent, noise-cancelling stabilizer system. Its 3D Sensor is equipped with shock absorption and helps minimize vibrations for a quiet wash, any time of the day.



**50dB(A)**  
Quiet Office



**62dB(A)**  
Whirlpool  
Dynamic Eco  
(Washing)



**65dB(A)**  
Human  
Conversation



**72 dB(A)**  
Whirlpool  
Dynamic Eco  
(Spinning)



**75dB(A)**  
Live TV, Mobile  
Phone Vibrating



**80dB(A)**  
Hair Dryer,  
Vacuum Cleaner,  
Boiling Kettle

# Convenience

---

## at your fingertips



### Large LED Display

An intuitive user interface for an effortless wash experience



### 15 Wash Programs

Multiple wash options to suit every need to provide ultimate garment care and convenience at your fingertips



### Wide Double Insulated Door

485mm wide drum door makes it easy for loading and unloading of laundry and heat insulated doors are safe to touch



### Quick Wash 15'

Rushing for time? Achieve a powerful wash performance in 15 minutes for lightly soiled clothes



### 1400rpm High Spin Speed

An outstanding spin speed of up to 1400rpm, which means drier clothes when the wash cycle is completed



### Time Wash

Enjoy the flexibility of choosing between various washing times for an optimized wash performance



### Drum Clean

Eliminate odour and bacteria for a hygienic wash while effectively and effortlessly cleaning your machine



### Delay Wash

Have the freedom of presetting your wash to finish up to 24 hours later to fit your schedule



# Specifications



## WFRB802AHW

Product Dimension WxDxH (mm):  
600 x 580 x 850  
EAN Code: 4897068761969

- Maximum Capacity: 8 KG
- Maximum Spin Speed: 1200 rpm
- Water Efficiency Labelling Scheme (WELS): 4 Ticks

### Features

- 6<sup>TH</sup> SENSE Technology
- SENSE Inverter
- 3D Sensor

### Functions

- 15 Wash programs
- ECO Wash
- Quick Wash 15'
- Time Wash
- Water Temperature Selection
- Drum Clean
- Start Delay up to 24hrs
- Child Lock



## WFRB904AHW

Product Dimension WxDxH (mm):  
600 x 580 x 850  
EAN Code: 4897068761952

- Maximum Capacity: 9 KG
- Maximum Spin Speed: 1400 rpm
- Water Efficiency Labelling Scheme (WELS): 4 Ticks

### Features

- 6<sup>TH</sup> SENSE Technology
- SENSE Inverter
- 3D Sensor

### Functions

- 15 Wash programs
- ECO Wash
- Quick Wash 15'
- Time Wash
- Water Temperature Selection
- Drum Clean
- Start Delay up to 24hrs
- Child Lock



## WFRB1054AHW

Product Dimension WxDxH (mm):  
600 x 635 x 850  
EAN Code: 4897068761945

- Maximum Capacity: 10.5 KG
- Maximum Spin Speed: 1400 rpm
- Water Efficiency Labelling Scheme (WELS): 4 Ticks

### Features

- 6<sup>TH</sup> SENSE Technology
- SENSE Inverter
- 3D Sensor

### Functions

- 15 Wash programs
- ECO Wash
- Quick Wash 15'
- Time Wash
- Water Temperature Selection
- Drum Clean
- Start Delay up to 24hrs
- Child Lock

# Whirlpool

DESIGNED TO DELIGHT

[www.whirlpool.com.sg](http://www.whirlpool.com.sg)

Customer Service Hotline: +65 6250 6888

 **Whirlpool Singapore**

